

Coventry City Council

REFERENCE NUMBER  
S73/2021/0337

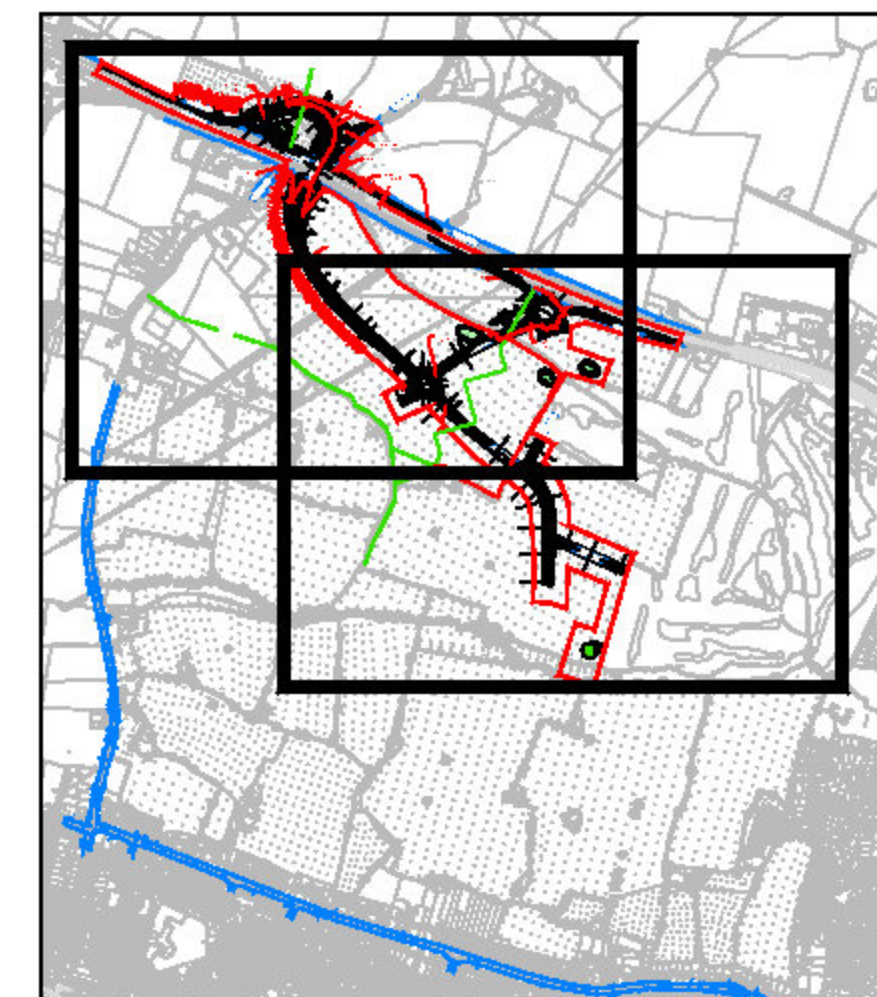
SITE: Construction of grade separated  
junction with associated access  
roads, landscaping, drainage and  
engineering works

SCALE 1:1250

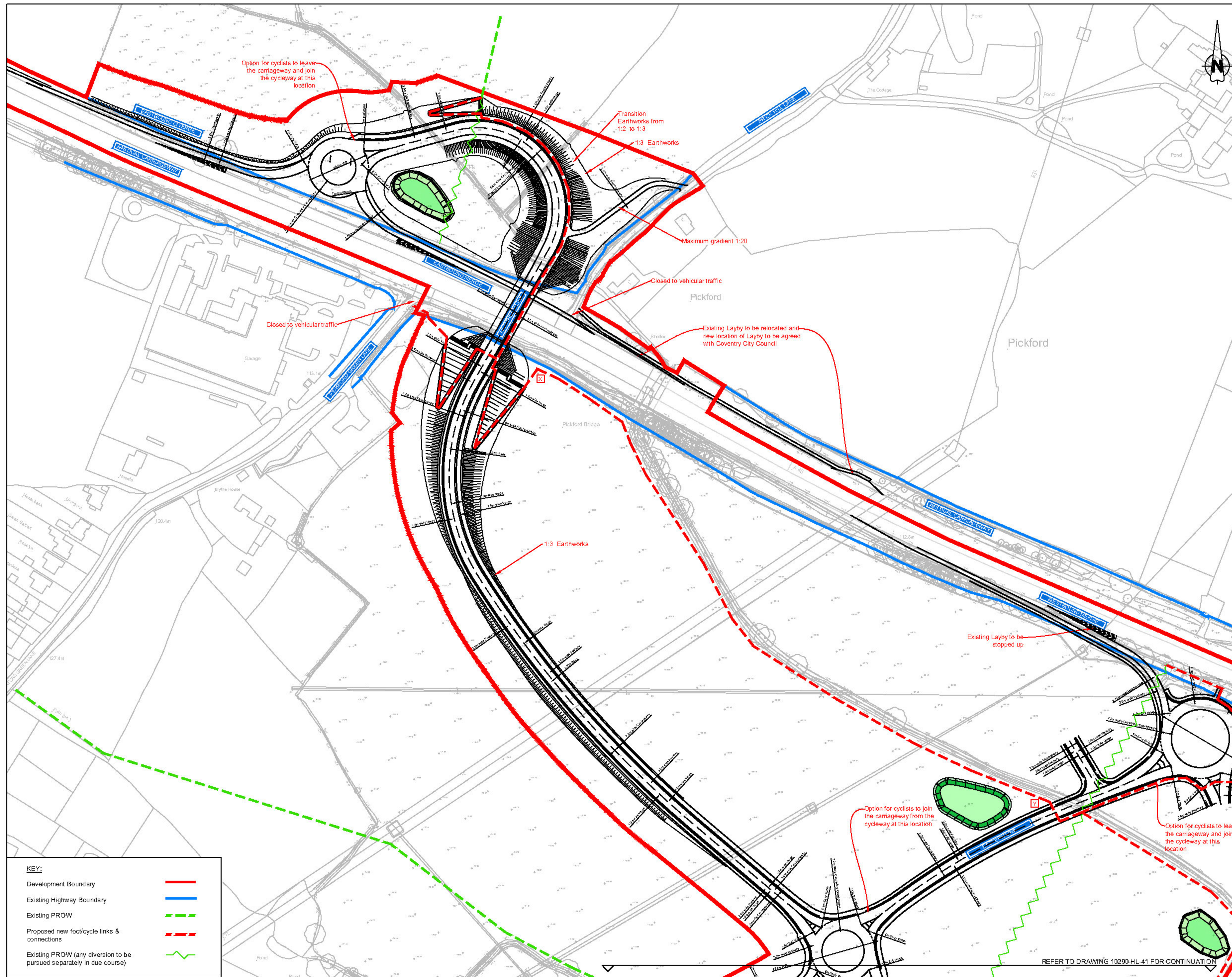
**Construction Design and Management (CDM)**  
**Key Residual Risks**  
 Contractors entering the site should gain permission from the relevant land owners and/or principle contractor working on site at the time of entry. Contractors shall be responsible for carrying out their own risk assessments and for liaising with the relevant services companies and authorities. Listed below are Site Specific key risks associated with the project.

- 1) Overhead and underground services
- 2) Street Lighting Cables
- 3) Working adjacent to water courses and flood plain
- 4) Soil ground conditions
- 5) Working adjacent to live highways and railway line
- 6) Uncharted services
- 7) Existing buildings with potential asbestos hazards

- NOTES:**
1. Do not scale from this drawing.
  2. This drawing has been based on survey data provided by a third party. Brookbanks Consulting Ltd cannot be held responsible for the accuracy of this information.
  3. The junctions, roundabouts and links have been designed in accordance with the following DMRB standards:
    - TA 23/81: Junctions and Accesses - Determination of Size of Roundabouts and Major-Minor Junctions
    - TD 9/93: Highway Link Design
    - TD 16/07: Geometric Design of Roundabouts
    - TD 22/06: Layout of Grade Separated Junctions
    - Manual for Streets.
  5. All highway layout and footway strategy information is subject to change following completion of the detailed design.



General Overview  
(Not to Scale)



**KEY:**

Development Boundary	—
Existing Highway Boundary	—
Existing PROW	—
Proposed new foot/cycle links & connections	—
Existing PROW (any diversion to be pursued separately in due course)	—

UNTIL TECHNICAL APPROVAL HAS BEEN OBTAINED FROM THE RELEVANT LOCAL AUTHORITIES, IT SHOULD BE UNDERSTOOD THAT ALL DRAWINGS ARE ISSUED AS PRELIMINARY AND NOT FOR CONSTRUCTION. SHOULD THE CONTRACTOR COMMENCE SITE WORK PRIOR TO APPROVAL BEING GIVEN, IT IS ENTIRELY AT HIS OWN RISK.

**Brookbanks**  
 6150 Knights Court, Solihull Parkway, Birmingham B37 7WY  
 Tel (0121) 329 4330 Fax (0121) 329 4331  
 www.brookbanks.com

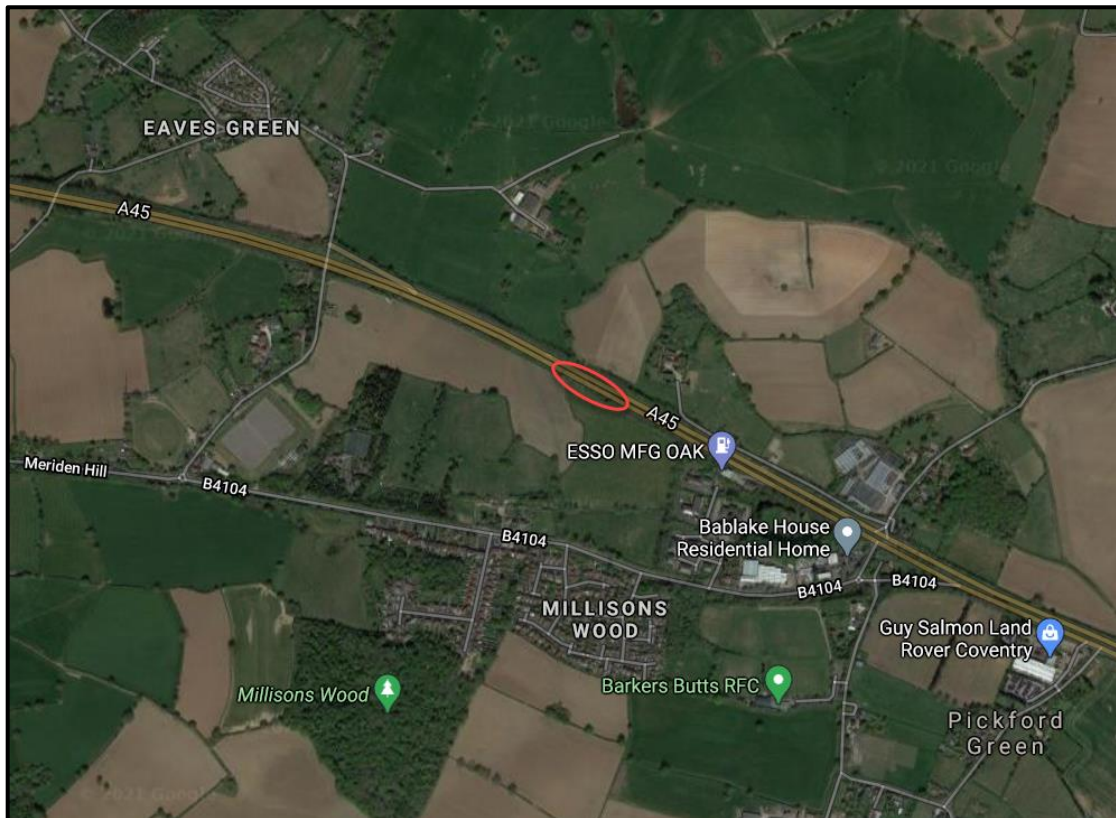
**Hallam Land Management**

Land North of Eastern Green  
 Coventry

A45 Pickford Green Interchange  
 General Arrangement Sheet 1

Status	For Comment	Date	05.01.2017
Drawn	MDM	Checked	LW
Scale	1:1250	Number	10290-HL-40
		Rev	G

0 25 50 75 100 125 METRES



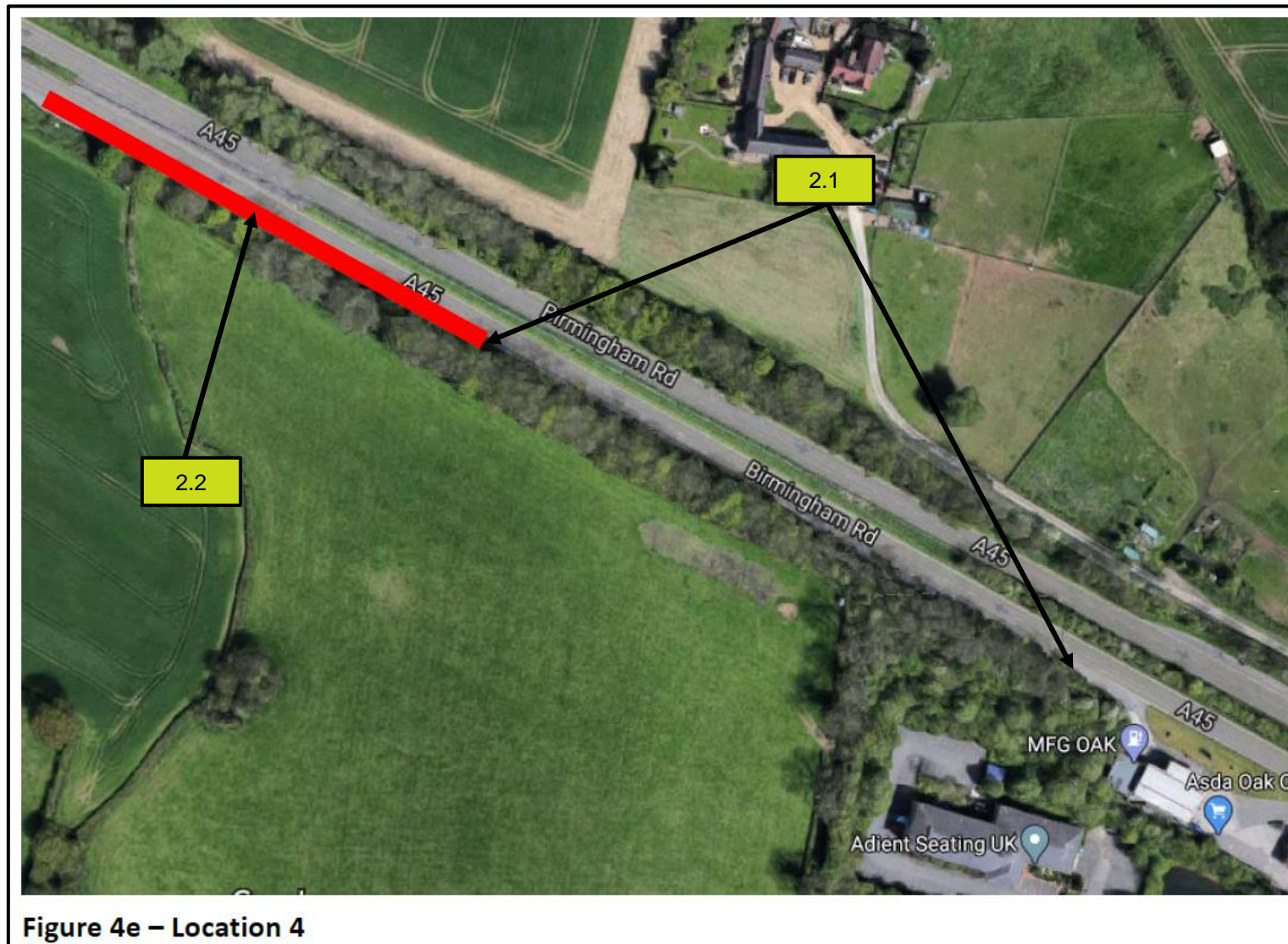


Figure 4e – Location 4